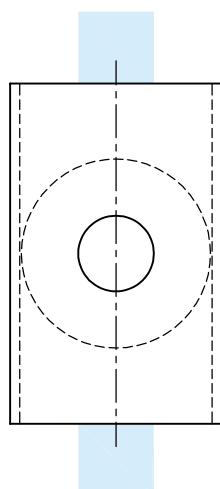
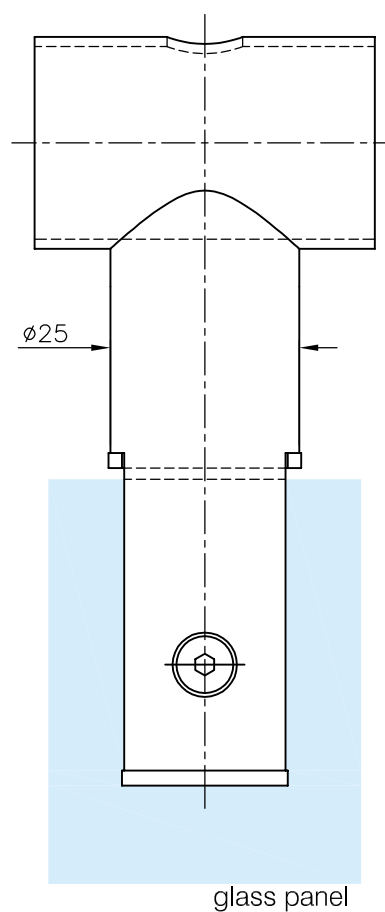
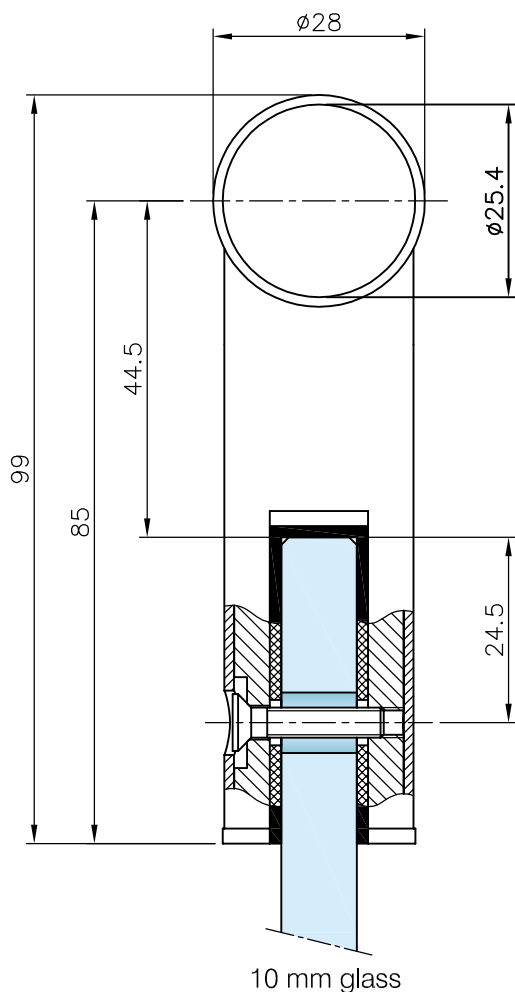
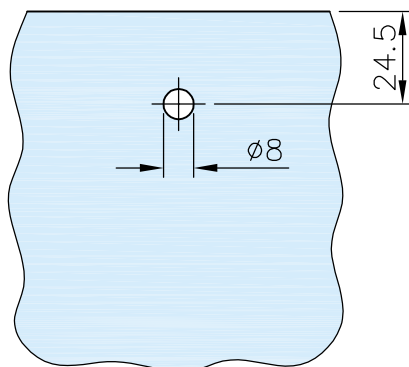
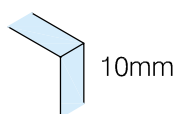


	Upper panel holder 180° - 10mm glass - Ø25,4 tube	Oberer Paneelhalter 180° - 10mm Glas - Ø25,4mm Rohr	Support supérieure 180° - 10mm verre - Ø25,4mm tube	Bovenpaneelhouder 180° - 10mm glas - Ø25,4mm buis
	stainless steel	V2A	inox	RVS
	...12 satin	...12 gebürstet	...12 brossé	...12 geborsteld
	304			



Glasausschnitt:
Glass cut out:



Montage:
Assembly:

